

# Hebei Anping TianYue welded wire mesh Co.,Ltd

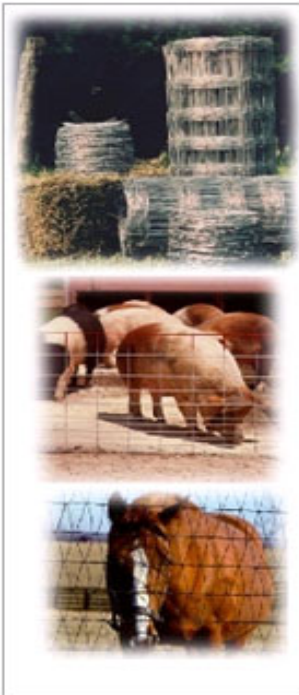
American Fence & Supply Co., Inc. E-store Fencing, Farm & Ranch

Farm and field fence is a specialty at Hebei Anping TianYue welded wire mesh Co.,Ltd.

As family ranchers ourselves, we have developed a product line unsurpassed and sure to meet the needs of your particular project. Hundreds of rolls of field fence, hog wire, sheep and goat wire, net wire, barbed wire, bull wire, horse wire, IN STOCK, and all American Made. No cheap imported wire for our customers.

To view detailed instructions for farm and ranch installation, Click [HERE](#)

## Farm & Ranch



Woven Field Fence

Horse Fence

Barb Wire

Wild Game Fencing

Rabbit & Poultry Wire

Welded Wire

Hardware Cloth

Wire Rod Panels

Poultry Netting

# High Tensile Woven Wire Fence

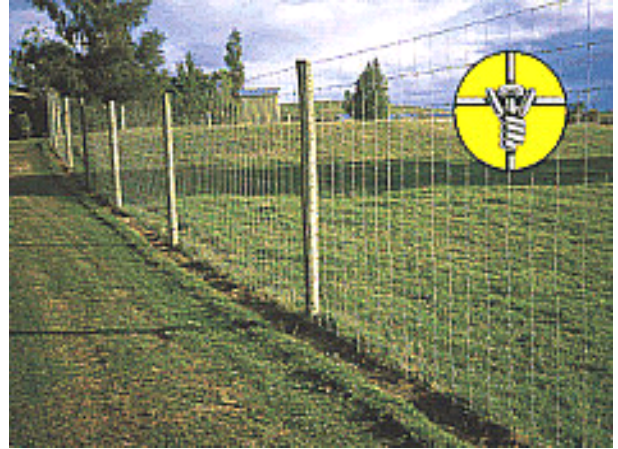
High Tensile Deer & Game Fence (woven wire) is used on deer and exotic animal farms and ranches.

It is also popular for protecting crops from wild deer damage and for low cost security fence.

It is available with 20 line wires 96" (2.4 m) high, in 330' (100 m) rolls.

This can be topped with additional high tensile smooth wire to any appropriate height.

Wires can be added to the top, bottom, or middle and electrified for additional security, for predator protection, or to help keep deer and game away from the fence.



TIGHT-GRIP? knots and stiff one piece stay wires make the strongest fencing. Used for deer, elk, bison, ostrich, wildlife control, and security fencing.

## The Best Field Fence Available Anywhere

High Tensile Woven Wire

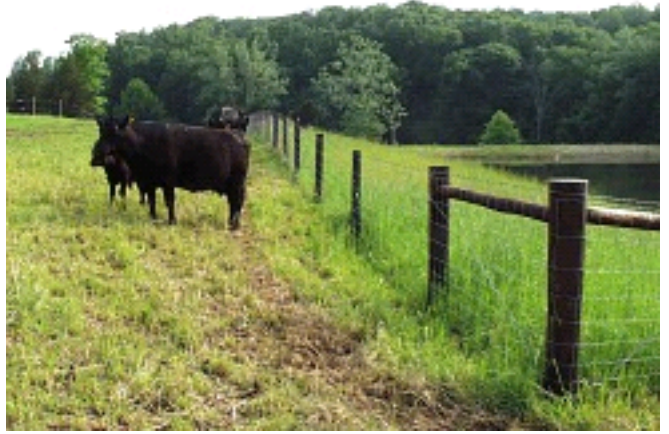
Outlasts and Out Performs Traditional Woven Wire

Available in 10/47/6 For Cattle, Horses, Sheep, And Goats

High tensile (grade 125 or 180) woven wire from MAX-FLEX? doesn't rust quickly like common woven wire brands and is stronger than nine gage soft wire.

When installed correctly, MAX-FLEX high tensile woven wire (A10H) will stay tight year after year so fewer posts are needed and labor and material costs are less.

Test fences that were installed twenty years ago are just as tight as the day they were built and still rust free.



This standard hinge joint design has ten horizontal line wires from 3 to 8 inches apart (8-20 cm), is 47 inches tall (119cm), and has a vertical stay wire spacing of 6 inches (15cm).

